



Using the InnoVisioNate Video and  
Scanning Tools

---

## **Table of Contents**

Creating an image field for the photo.....	3
Retaking the picture.....	8

# What are the Video and Scanning Tools?

---

When you define your signature capture fields (non data entry), you can create them as “placeholders” for a bitmap within your data. The storage location for the bitmap(s) is available, however, in this case, you don’t collect handwriting from the visitor to create that bitmap. Instead, some external tool will provide it through the Visio Logger integration interfaces.

These 2 tools are perfect examples of just such an external tool. With them, you can snap a photo of your visitor, or, you can scan any document, insurance card, or drivers license, and put the image in the Visio Logger database, visible along with all of the other data for your visitors.

Also, any computer in the facility with the appropriate device, can utilize these tools at any time. One can imagine, for example, a beauty salon which snaps a before and after photo of the client.

To clarify – the Video tool is for taking pictures, the Scanning tool is for scanning documents or some other item, such as a driver’s license. Also – these tools use the Windows WIA Interface (Windows Image Acquisition), therefore, it works with WIA enabled devices, which includes the vast majority of equipment. A TWAIN imaging version is available, please contact InnoVisioNate if this is something you may need.

The source code for these objects is installed along with Visio Logger in its run time data location. Customization of them is at your fingertips.

## Creating an image field in your data

You first need to create one or more “image” field in the fields you want to capture. In the Visio Logger main menu (running as administrator), select Edit → Columns, this brings up the pages and fields definition dialog as seen in Figure 1.

In the figure, I have clicked on the “New” tab, which created a new Page (Page 5), and then a new “New” tab. This gives me an empty page (no fields) to work with. However, I could have defined our image field on the Page 4 tab.

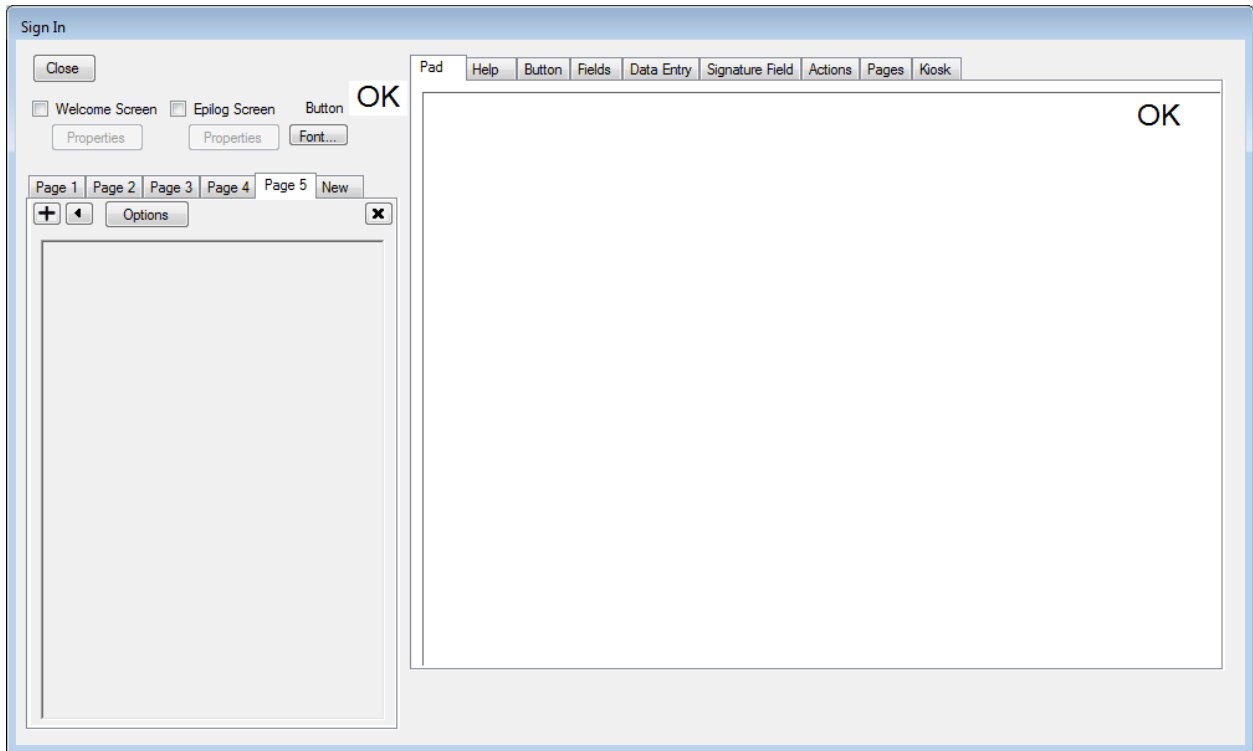



Figure 1 Defining Pages and Fields

Note that it does not matter which Page you put your field on. The only consideration is where in the columns of data you want this image to appear. The higher the Page # you use, the more to the right the picture will be.

To create our field, click  just under the Page # tab at the top of the window.

Make this new field an "Image field" by providing any name in the "Field Name:" entry on the Signature Field tab.

In Figure 2, we have created a field called MugShot, and have defined it to be 320 x 240 pixels. Keep in mind that your aspect ratio (x / y) should be close to what that is for your camera but that the picture taken will fill the size field you define. If you are using the Scanning tool, create your field in the same dimensions that your scanner will be providing.

Note carefully that we also turned the option "Generic Image, ignore pad", on.

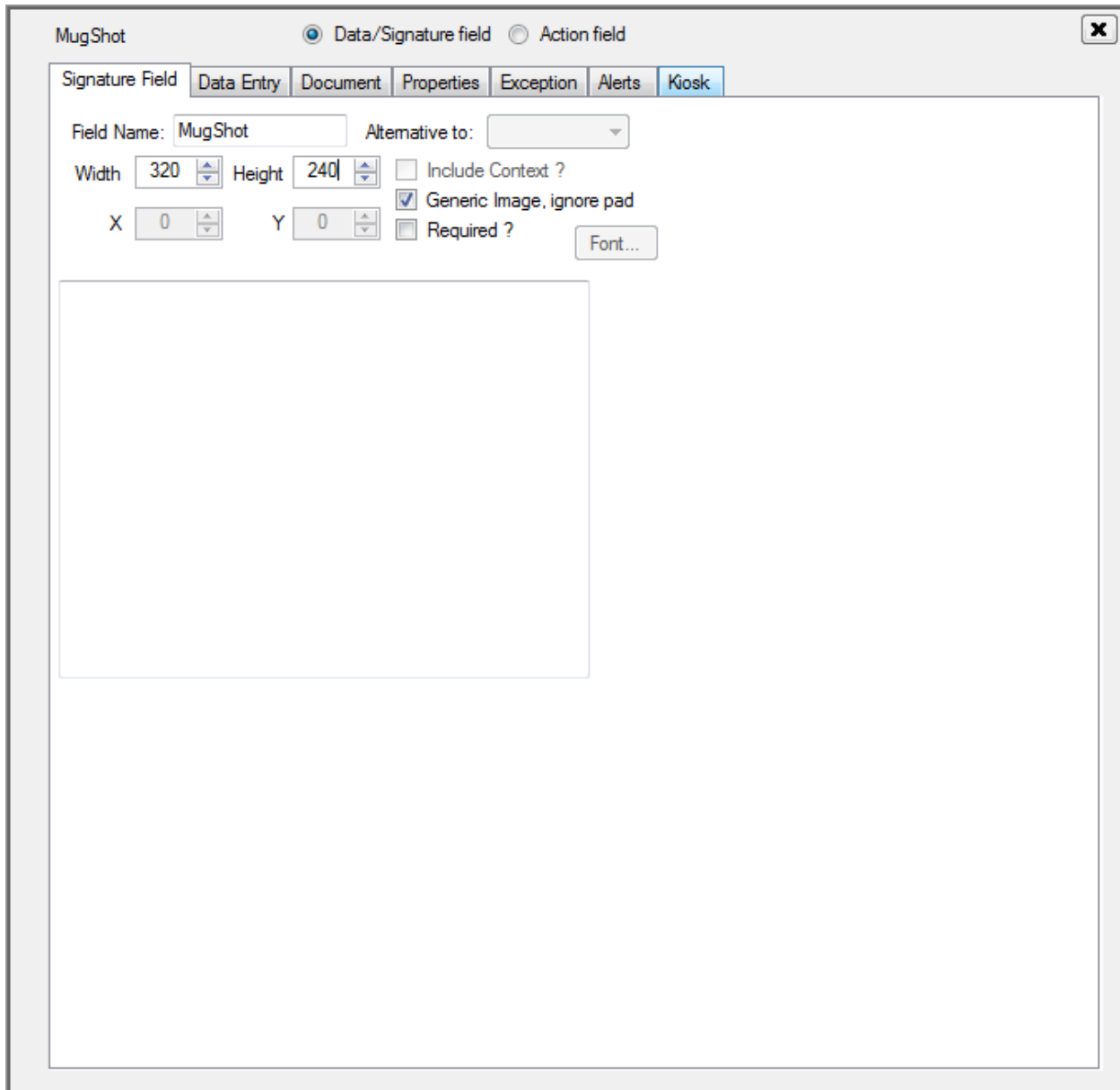


Figure 2 Defining an image field for the picture

Now, save your field definition by clicking Close in the upper left (of Figure 1).

Your field is now ready as a target for either the Scanning or Video tool.

## Configuring the Video Tool

To configure any of the external tools, run Tools → Toolbox from the Visio Logger main menu. You will see the selection and configuration dialog, the right half of which is shown in Figure 3.

Make sure that the tool is configured to run on “After the record is complete” as in Figure 3. Note that we also configured the tool to run when an action is taken, we will show why shortly.

When an action is taken ...

Execute the selected tasks

Use ?	Description	Props	Test
<input checked="" type="checkbox"/>	InnoVisioNate Video tools	<input type="text"/>	<input type="text"/>
<input type="checkbox"/>	Niagara County Community College Student Entry Sy...	<input type="text"/>	<input type="text"/>
<input type="checkbox"/>	InnoVisioNate Imaging tools	<input type="text"/>	<input type="text"/>
<input type="checkbox"/>	InnoVisioNate E-Mail Action Processor	<input type="text"/>	<input type="text"/>

After the record is complete...

Execute the selected tasks

Use ?	Description	Props	Test
<input checked="" type="checkbox"/>	InnoVisioNate Video tools	<input type="text"/>	<input type="text"/>
<input type="checkbox"/>	InnoVisioNate Badge Printing Processor	<input type="text"/>	<input type="text"/>
<input type="checkbox"/>	InnoVisioNate Sign Out Processor	<input type="text"/>	<input type="text"/>
<input type="checkbox"/>	Milestone Visio Logger Processor	<input type="text"/>	<input type="text"/>
<input type="checkbox"/>	InnoVisioNate Spreadsheet Tools	<input type="text"/>	<input type="text"/>
<input type="checkbox"/>	InnoVisioNate E-Mail New Row Processor	<input type="text"/>	<input type="text"/>

When a key is tapped on the pad keyboard ...

Execute the selected tasks

Use ?	Description	Props	Test
<input type="checkbox"/>	Milestone Pad Key Struck Processor	<input type="text"/>	

Figure 3 Configuring the Video Tools – partial (right side) view

Click the “Props” button in the row for InnoVisioNate Video tool – for either interface (action or record complete), they are the same properties.

The first time you do this, you will see:

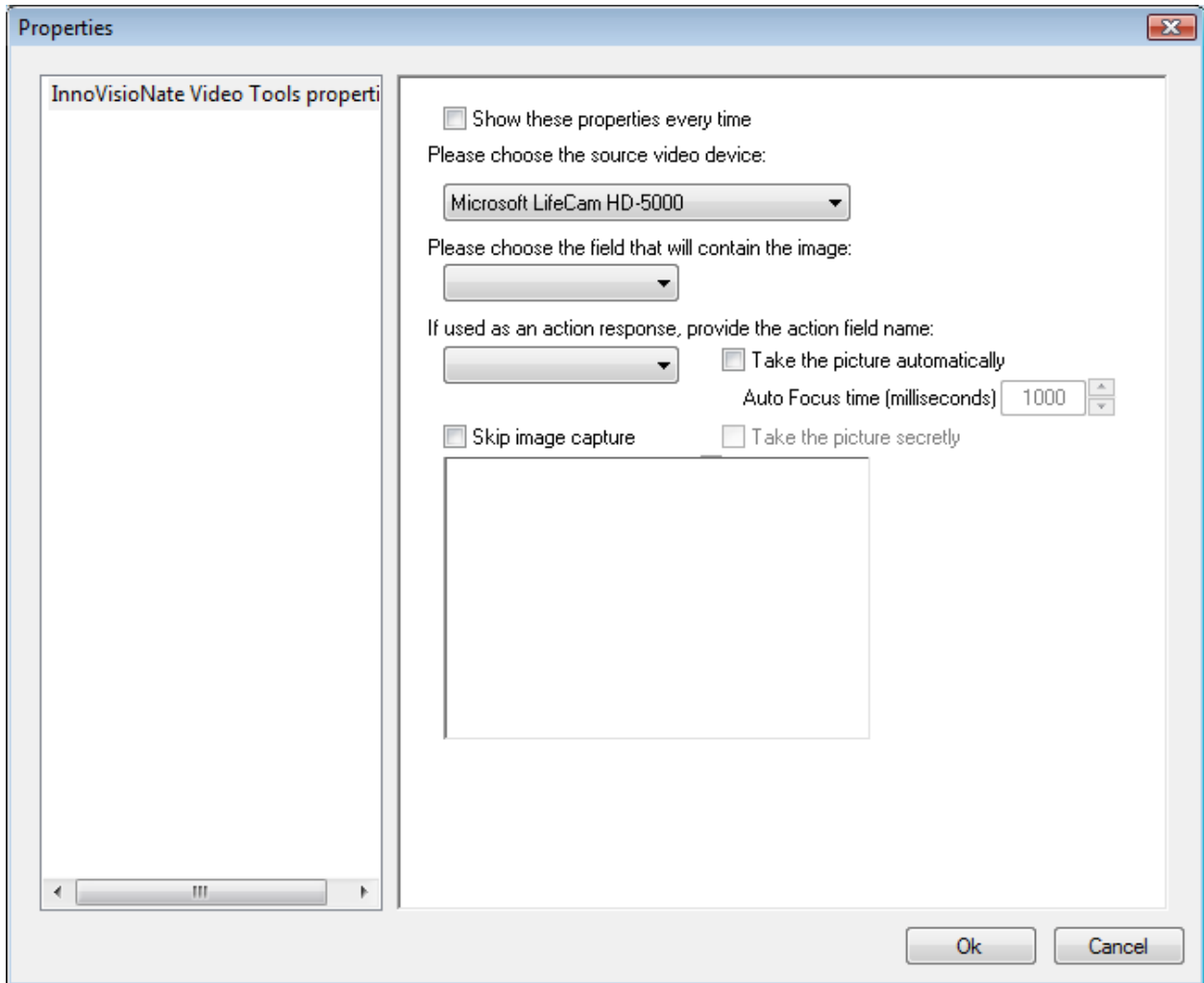


Figure 4 InnoVisioNate Video Tools properties

If your computer has a webcam connected, it will be in the “Please choose the source video device:” drop down list, select the appropriate camera from that list, and the image from that camera should appear in the lower half of Figure 4 presently.

Now, choose the field that we just defined in the “Please choose the field that will contain the image:” drop down list. Note that any image field in the database could be used for this, you can, for example, overwrite an existing handwriting field with a picture if you wanted to.

Ignore the “provide the action field name” setting for now – we haven’t created the action field yet.

The 2 options, Take the picture automatically, and “Auto Focus time” are used if you want the system to simply snap the picture. If these are not set, then the operator at the computer would need to click a “Snap” button at run time to allow the signer time to fix their hair or adjust their smile.

The Auto Focus time is an amount of time the camera needs to focus to get the picture right. You may need to experiment with this depending on your hardware response time.

The “Skip image capture” option would be used to simply turn off the feature for a period of time, until you come back to these settings and turn it back on.


Finally, the “Take picture secretly” option allows the system to launch this tool without becoming visible on the computer monitor it is running on. If the signer could see that monitor, they would know their picture was being taken, with this option, they don’t know even if they *can* see the monitor.

This is all that is required, now run Visio Logger in Logger mode and you will see a dialog appear when the signer finishes entry of their data. If the “Take the picture automatically” option is off – click Snap on that dialog when the subject is ready. If “Take picture secretly” is on, you won’t see this dialog at all.

### Retaking the picture

You may want to set up taking the picture as an option – or have the ability to re snap the photo in case it doesn’t come out, or to snap an additional photo later in the day or from a different computer all together.

Recall that, in the Integration settings, we turned on the option to have the Video Tools respond to an action. Let’s define that action so that we can cause this event to fire.

Again, choose Edit → Columns from the main menu, and click  just under the Page # tab at the top of the window.

This time, we create an action field, provide the name for the field and the button, as shown in Figure 5.

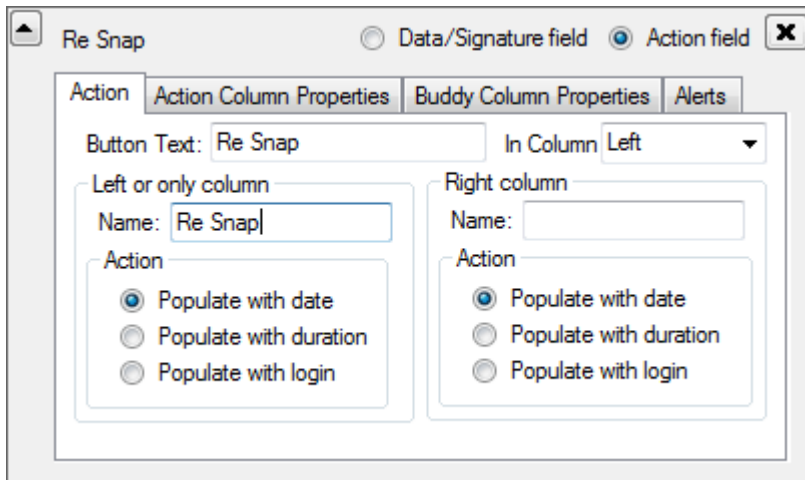


Figure 5 Re Snap action

Go back to the properties of the integration object, as shown in Figure 4, and choose this field in the drop down list under “If used as an action response, provide the action field name:”.

Now you can re-take these pictures at any time – by simply clicking on the “Re Snap” button on the row of data.



Did you also know that you can right-click any action column and undo that action? This is convenient, for example, if you want to snap that photo a second or subsequent time.

## Configuring the Scanning tool

The choice to use the scanning tool, and to reach its property settings, are the same as with the Video Tool, simply find the “InnoVisioNate Scanning tool” row in the toolbox settings as shown in Figure 3.

The properties for the scanning tool are quite simple, they are shown in Figure 6.

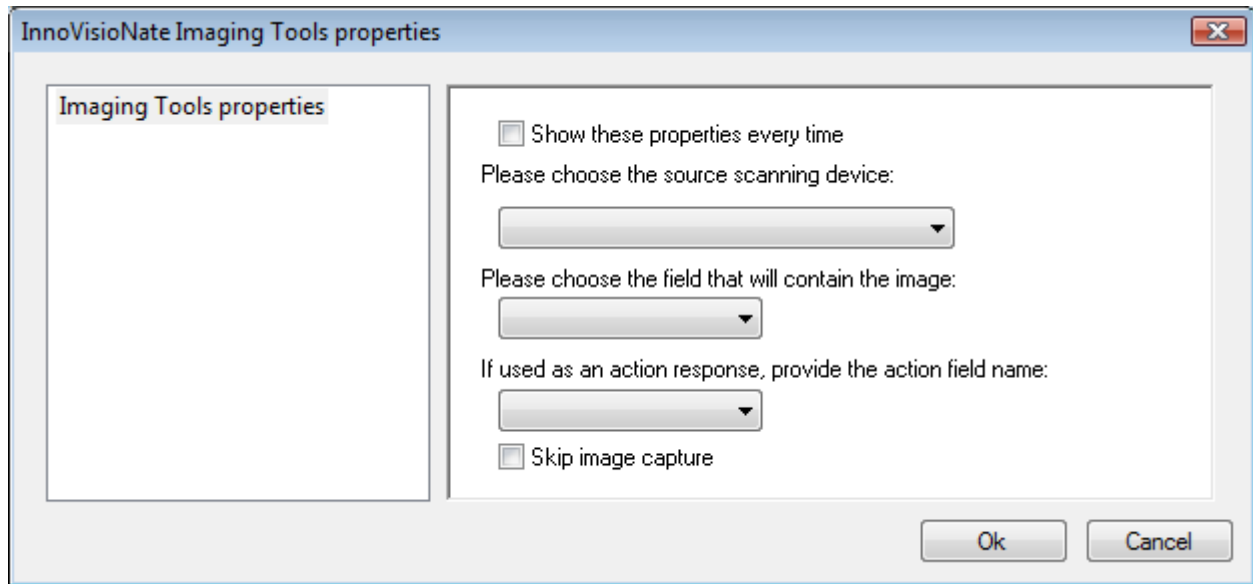


Figure 6 Scanning tool properties

Here, all you need do is select the source scanning device (any WIA compliant scanner connected), and the target field for the scan that will occur after the visitor has finished signing in, and, optionally, the source action field that, when taken, will initiate scanning activity.